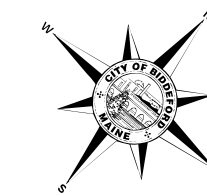
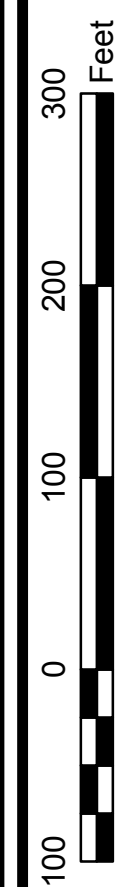


8-3-1



North is based on the
Maine State
Coordinate System
NAD 1983

North Rotation is 320°

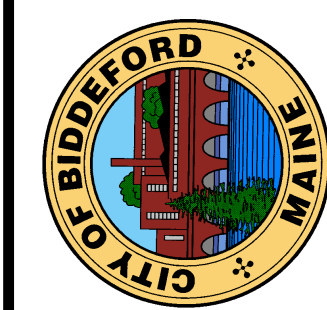


1 inch = 100 feet

UPDATED THROUGH APRIL 1, 2018

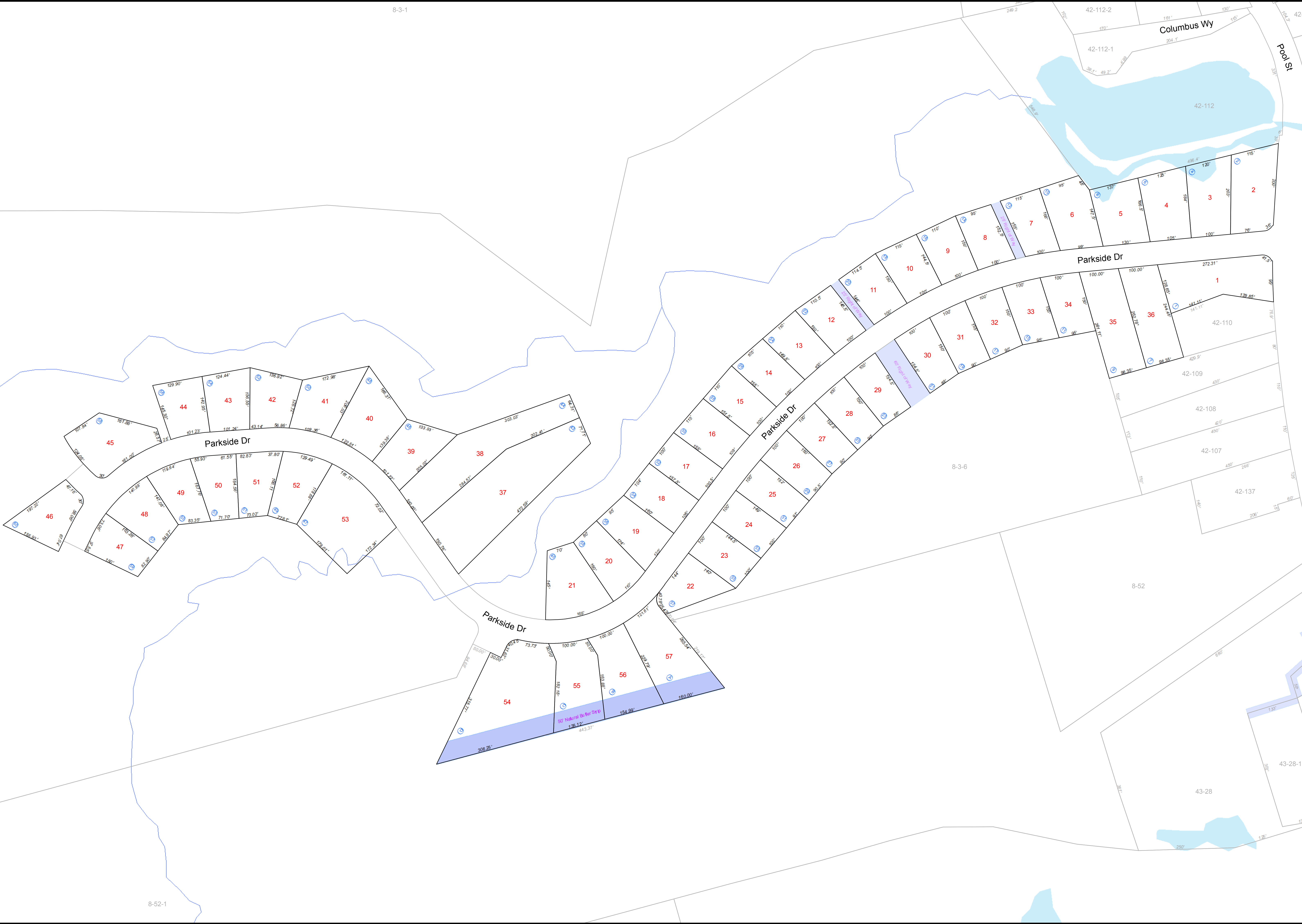
FOR ASSESSMENT PURPOSES ONLY
NOT TO BE USED FOR CONVEYANCES

The City of Biddeford, Maine
OFFICIAL TAX MAP
Office of The Tax Assessor
Nicholas Desjardins, CMA
Assessor



This Map is Prepared By
The City of Biddeford, Maine
Technology Department
GIS Division
205 Main Street - P.O. Box 586 - Biddeford, Maine 04005
207-571-0660 - gis@biddefordmaine.org

86
Tax Map



8-52-1