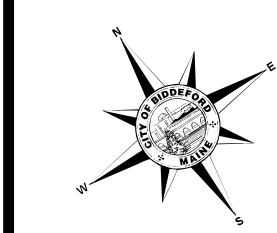
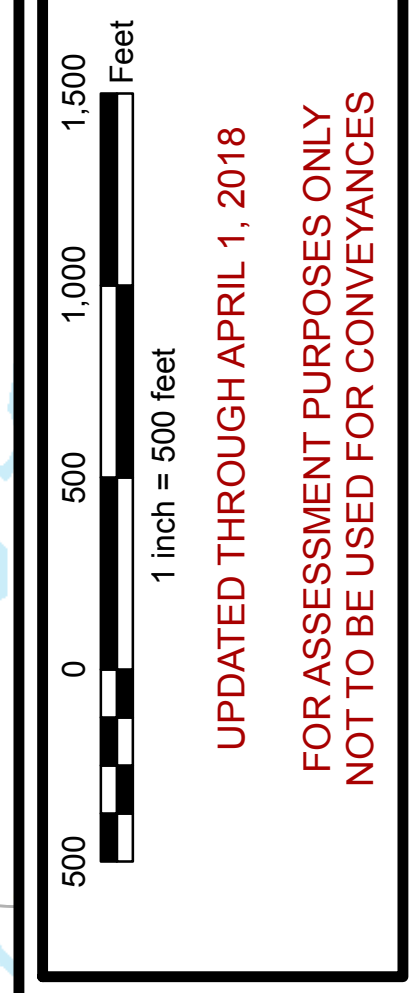


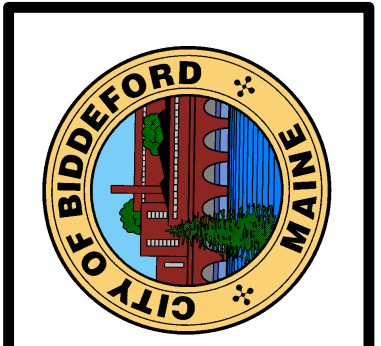
DAYTON



North is based on the  
Maine State  
Coordinate System  
NAD 1983  
North Rotation is 33°

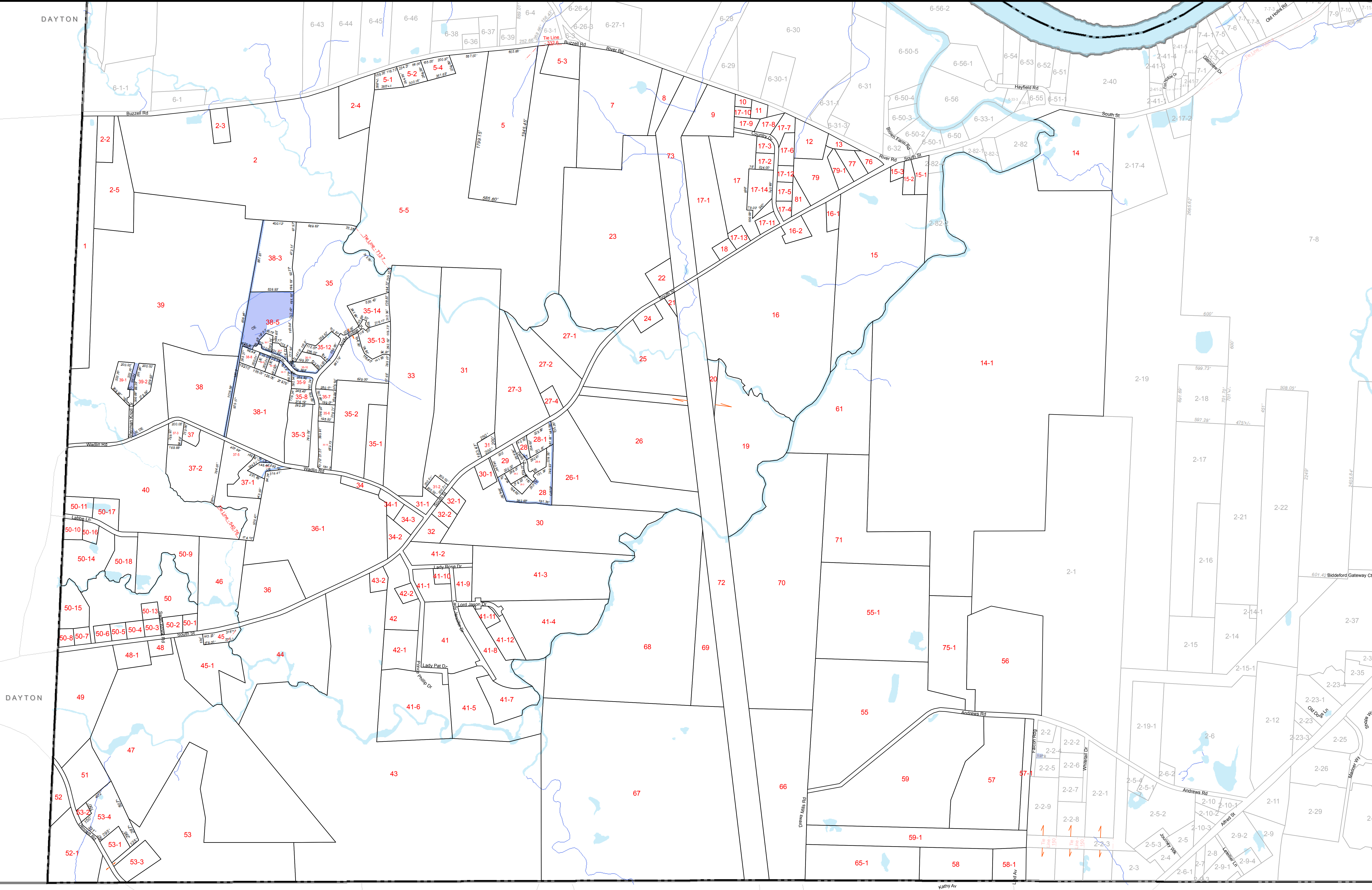


The City of Biddeford, Maine  
**OFFICIAL TAX MAP**  
Office of The Tax Assessor  
Nicholas D. Desjardins, CMA  
Assessor



This Map is Prepared By  
**The City of Biddeford, Maine**  
Technology Department  
GIS Division  
205 Main Street - P.O. Box 386 - Biddeford, Maine 04005  
207-571-0660 - [gis@biddefordmaine.org](mailto:gis@biddefordmaine.org)

**1**  
Tax Map



DAYTON

ARUNDEL

ARUNDEL