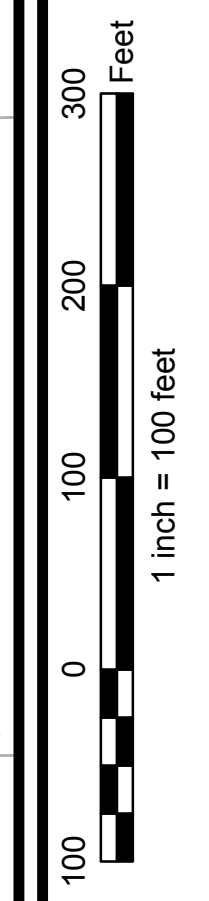


North is based on the
Maine State
Coordinate System
NAD 1983
North Rotation is 306°



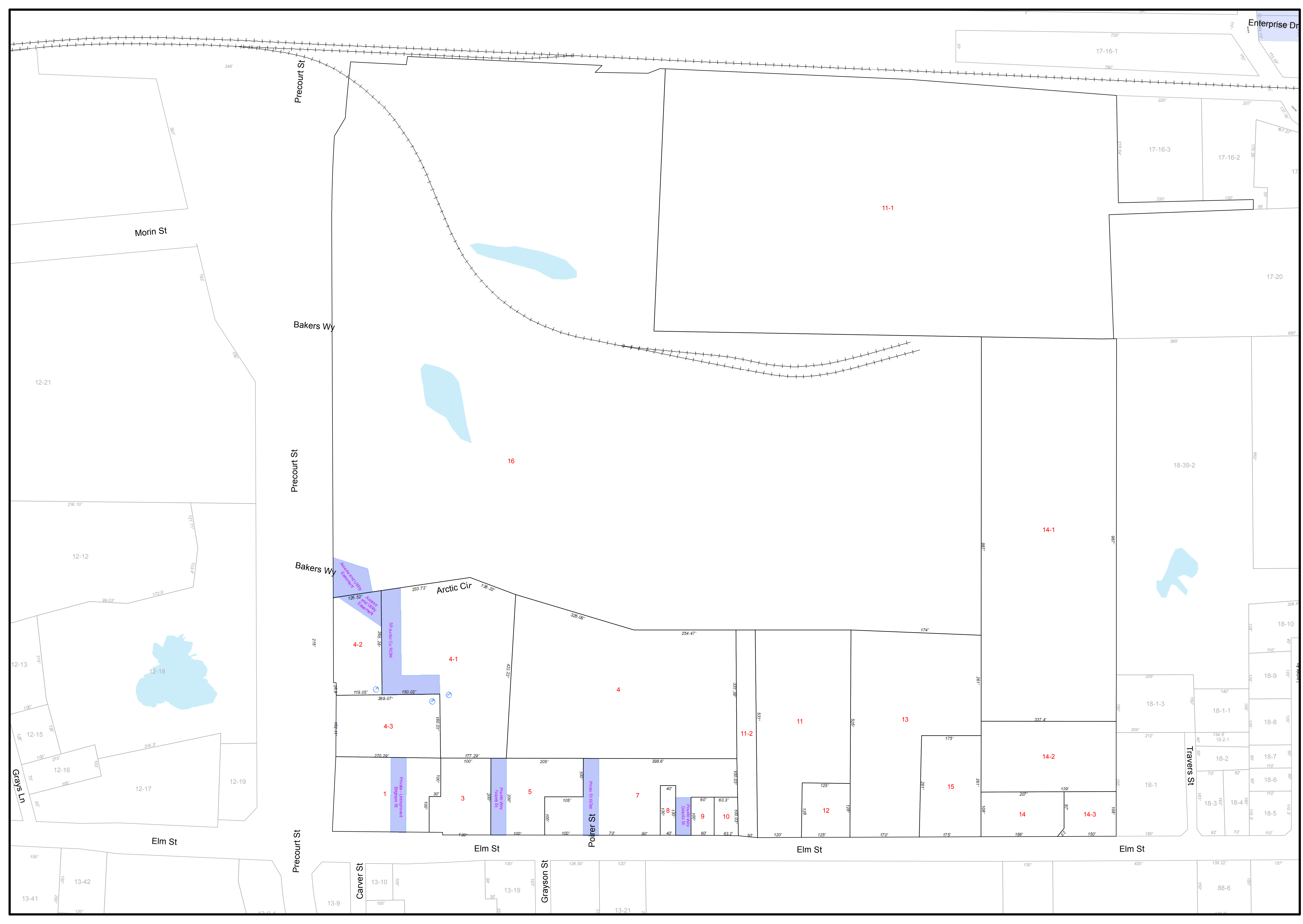
UPDATED THROUGH APRIL 1, 2018
FOR ASSESSMENT PURPOSES ONLY
NOT TO BE USED FOR CONVEYANCES

The City of Biddeford, Maine
OFFICIAL TAX MAP
Office of The Tax Assessor
Nicholas Desjardins, CMA
Assessor



This Map is Prepared By
The City of Biddeford, Maine
Technology Department
GIS Division
205 Main Street - P.O. Box 586 - Biddeford, Maine 04005
207-571-0660 - gis@biddefordmaine.org

14
Tax Map



Assessed Utility
Equipment

Assessed
Public Utility
Equipment

50 Arctic Cir ROW

Private Landscaped
Program St

Private Way
Arctic Cir

Private St
Poier St

Assessed
Public Utility
Equipment

Assessed
Public Utility
Equipment

Assessed
Public Utility
Equipment

Traverser St

Landada Av